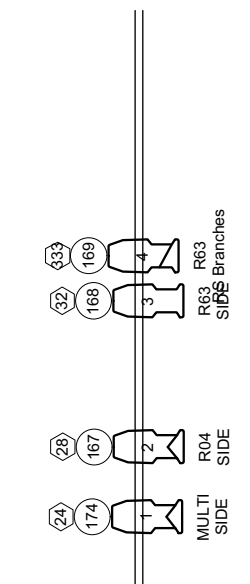
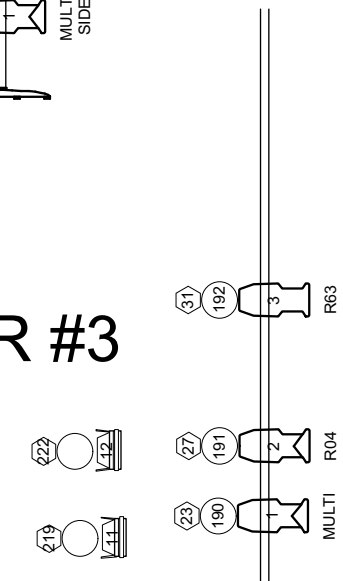


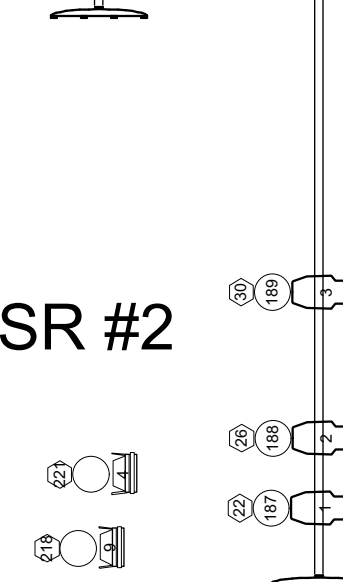
Boom SR #4



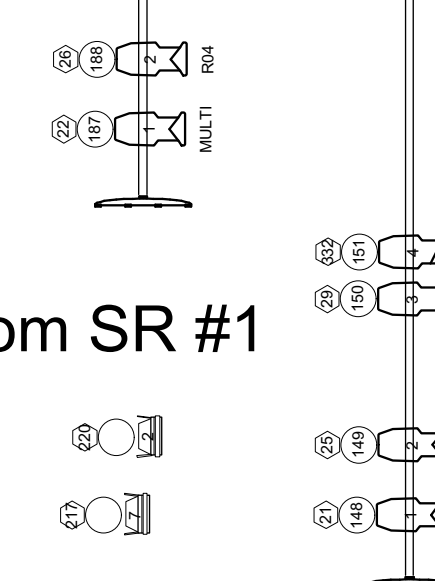
Boom SR #3



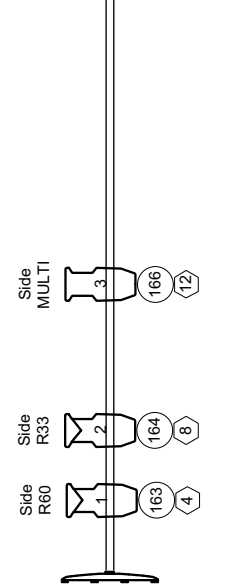
Boom SR #2



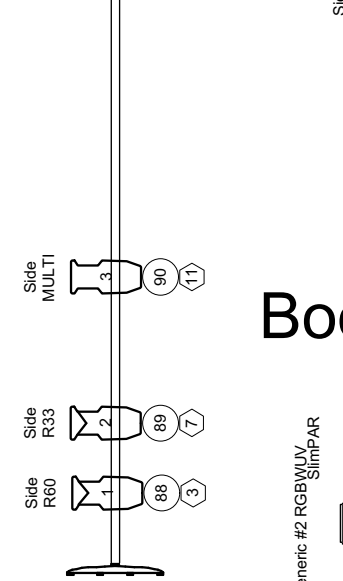
Boom SR #1



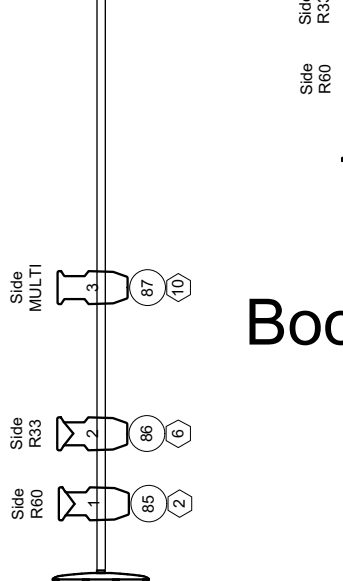
Boom SL #4



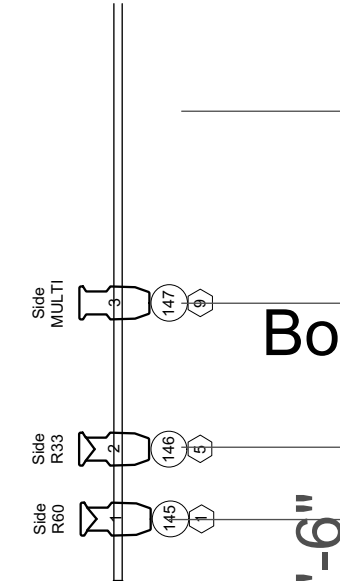
Boom SL #3



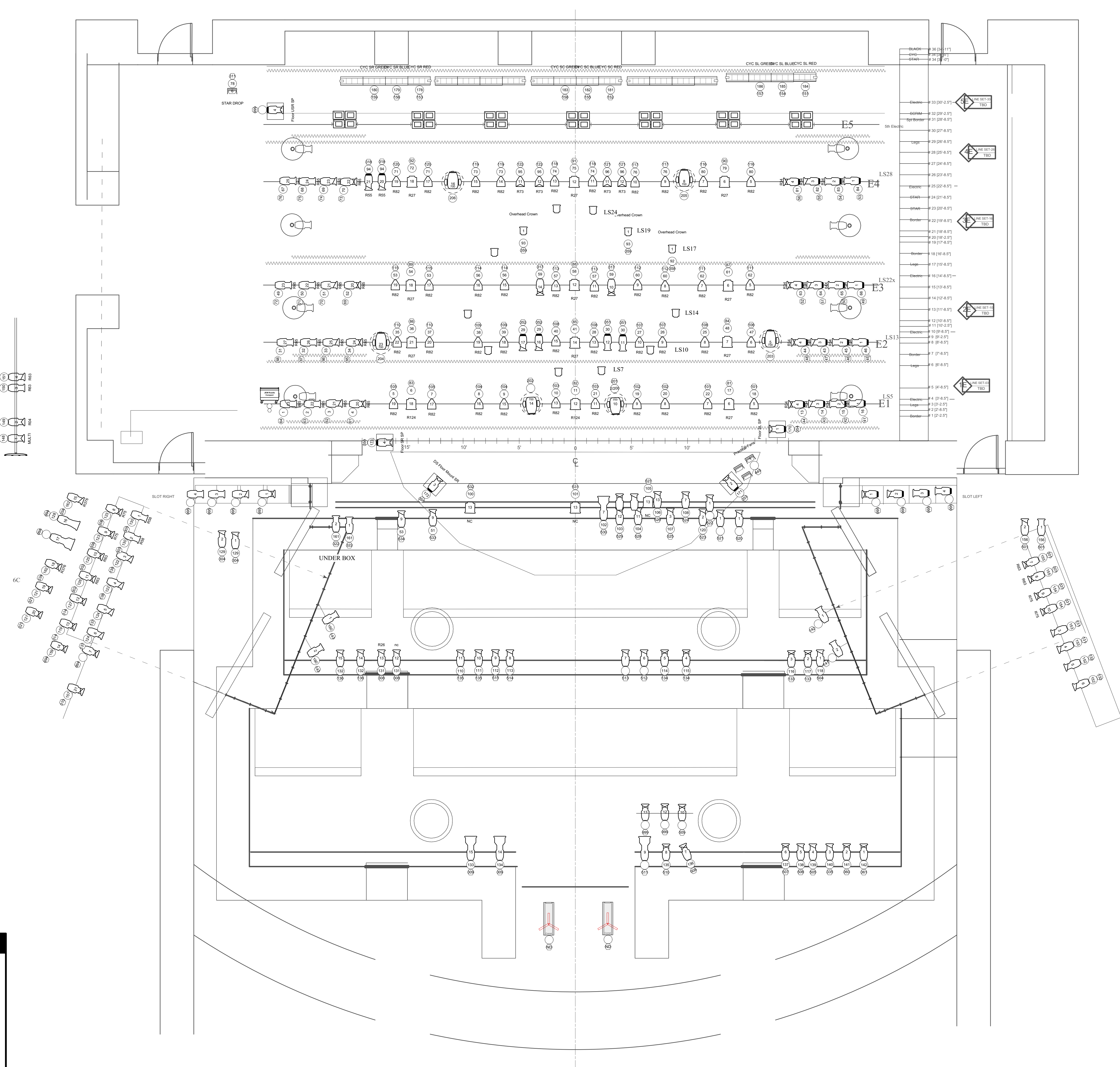
Boom SL #2



Boom SL #1



Dimensions Typical



**Notes:**

- \* 45 twisters, 3 - 6 circuit multicables, 10 long jumpers at least 25 circuits on floor. Are 45 circuits available?
- Assume 18" centers unless specified.
- Designer will direct final position of all floor boom locations. Trim heights will be verified and finalized on site.
- All units to be equipped with safety cables.
- All barrels run full in at all times.
- Fire cloth as needed
- Circuit numbers entered as suggestion, any changes to be related to designer before patch entered into console.
- Top Hat Boxes and Slots

**Questions:**  
Bob Cardana  
(406) 888-6290 office  
(406) 291-4276 cell  
Email bob@cardana.net

This drawing represents design intent and concept only. All specifications herein relate safety to appearance of the lighting and not to matters of electrical or structural soundness and/or safety. The lighting designer is not qualified to assess the electrical or appropriateness of the structure, rigging or design, and assumes no liability. The designer agrees to make prompt correcting alterations to any specification per facility safety officer.

Key		Legend	
	S14-14, 750W		575 watt version
	S14-50, 750W		575 watt version
	S14-36, 750W		FRESNEL 2 kW
	S14-26, 750W		6" FRESNEL 1kW
	S14-19, 750W		ALTMAN SPECTRA CYC 100W
	SOURCE 4 PAR LAMP AS INDICATED, 750W		HIGH END SYSTEMS STUDIO COLOR 575 700W
			Light Fixtures
			Boom Designation
			Cable Accessory
			Multicable/Truss (Wallage (Black=700W))
			Overhead Truss
			Cable Tray (Black=700W)
			Cable Tray (White=700W)
			Cable Tray (Black=700W)

Shenandoah Conservatory Presents:

## Winter Dance 2017

Maurice Fraga - Artistic Director  
Ohrstrom-Bryant Theatre

Lighting by Robert Cardana  
cardana@cardana.net (406) 291-4276

Original Drawing & Rep Plot by: Andreas Carlson	Production Electrician: Andreas Carlson	Plate: 1 of
Scenic Design: File: V5.3	Scale: 1/4" = 1'-0"	
Drawn by:	Date: 01/11/2017	